

Overview:

These installation instructions are for the SteelSmart® Framer (SSF) for Revit. This installer includes the plugin for both Revit 2015 and Revit 2017. You may install both or elect to install only one by doing a custom installation

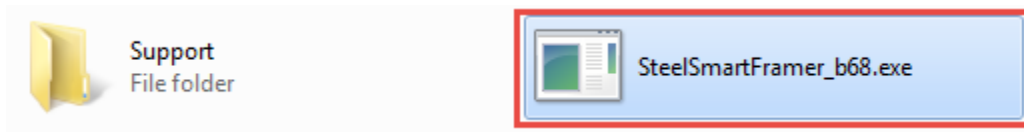
Download & Uncompress Installer:

Download the latest installer by logging into your account on the ASI Portal (<https://portal.appliedscienceint.com>). The installer will be located on the Download Tab. Note: You will only see the download if you have an active subscription for the software. If your subscription has expired, renew your subscription through your account on the ASI Portal or contact your ASI Sales Representative.

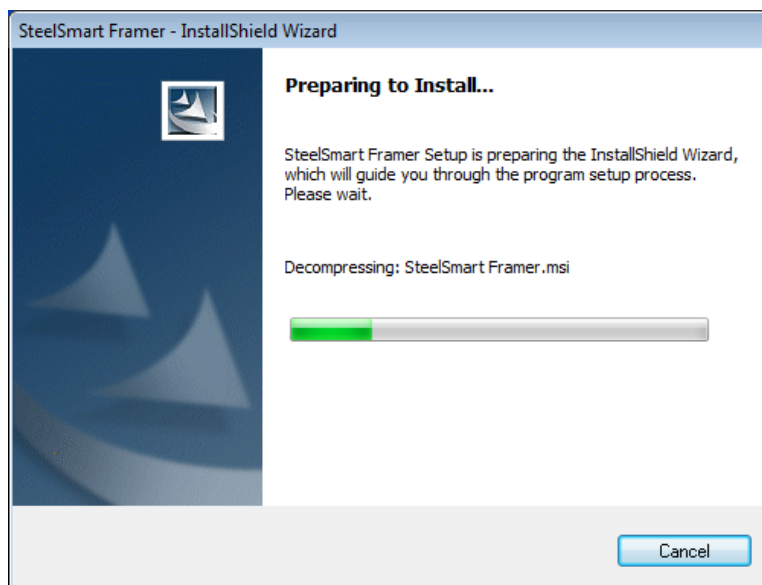
Once you've downloaded the installer, navigate to where you downloaded it to and unzip the download. You will notice the installer called SteelSmartFramer_bXX.exe (the number in place of XX may differ depending on the build and a Support folder. The support folder contains supporting software required to run the SSF should you not already have it installed.

Begin Installation:

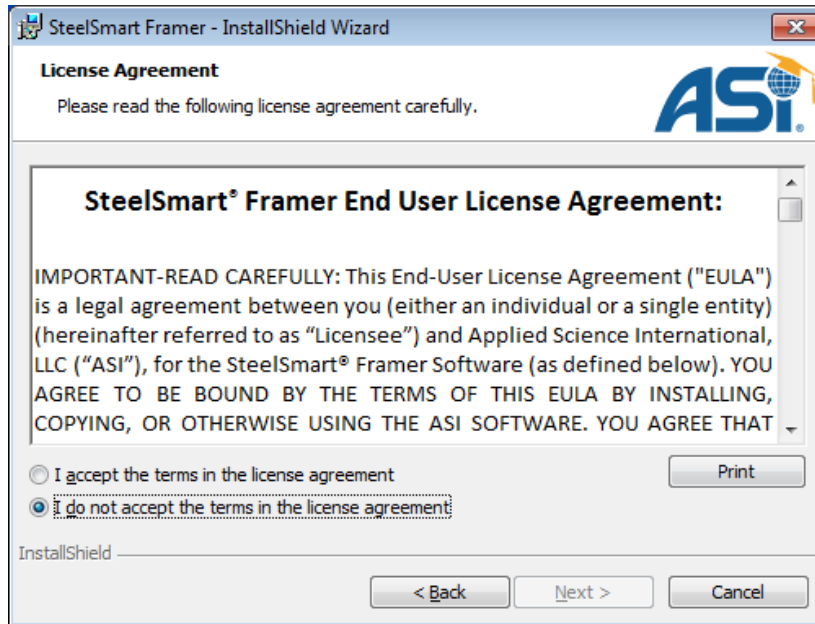
1. Run the SteelSmart Framer EXE installer;



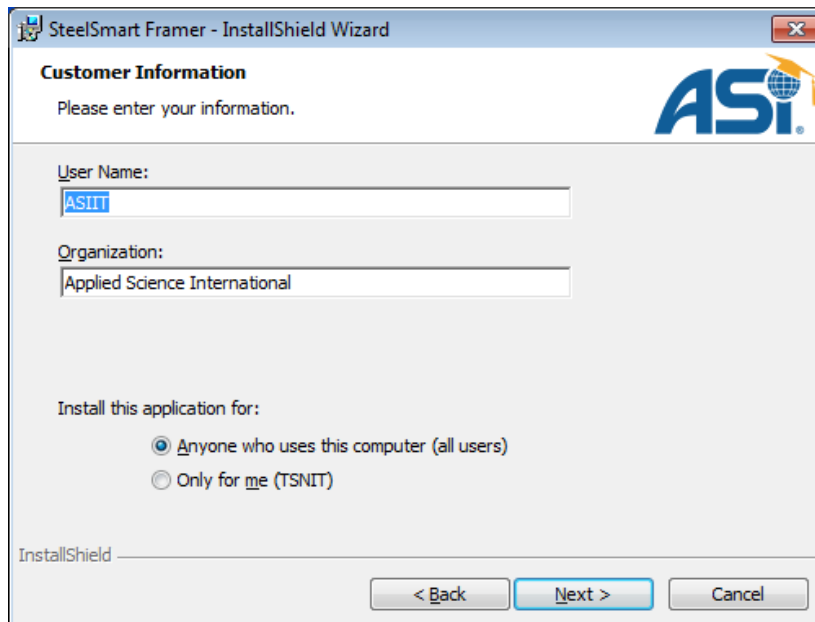
2. Once the installer is opened you will see the InstallShield Wizard below:



3. Review and accept the End User License Agreement:



4. Enter your Username and Company:

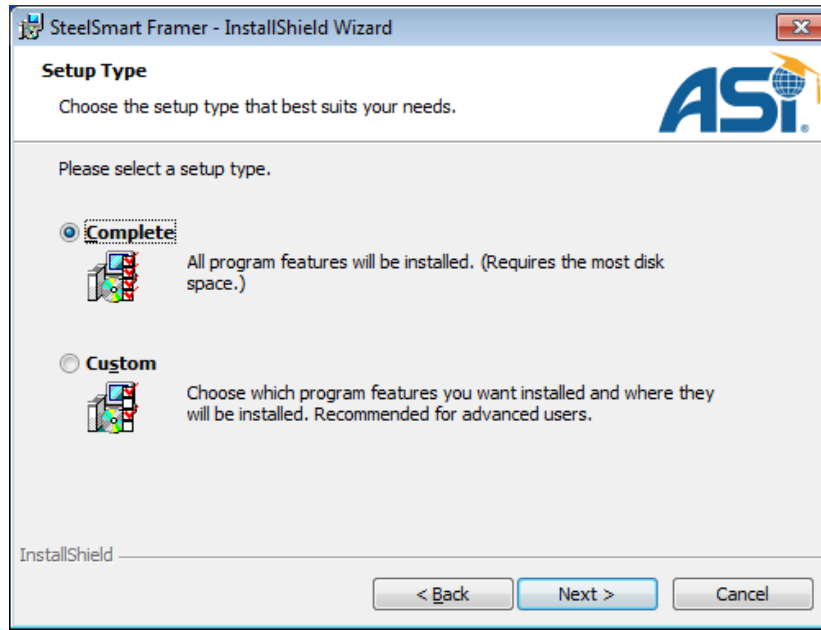


SteelSmart® Framer – Plugin for Revit

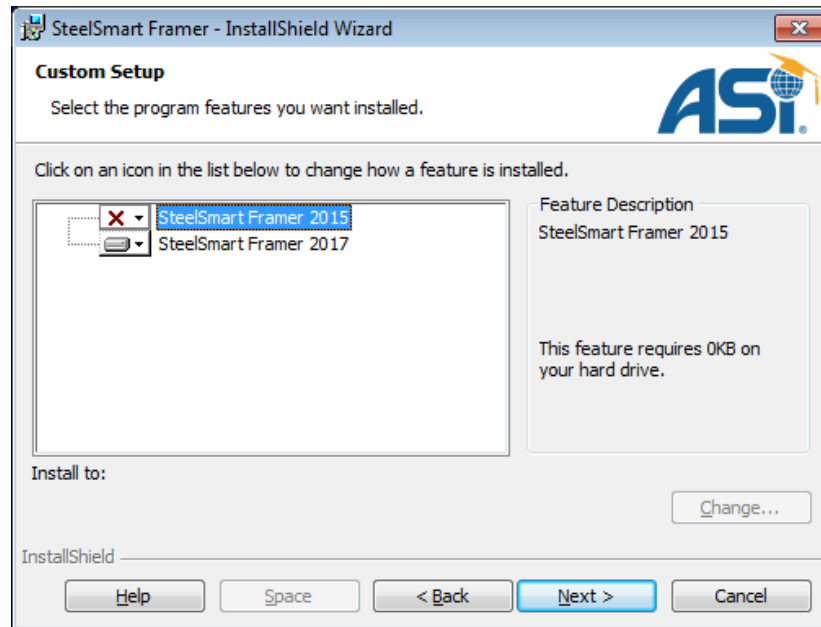
Installation Instructions



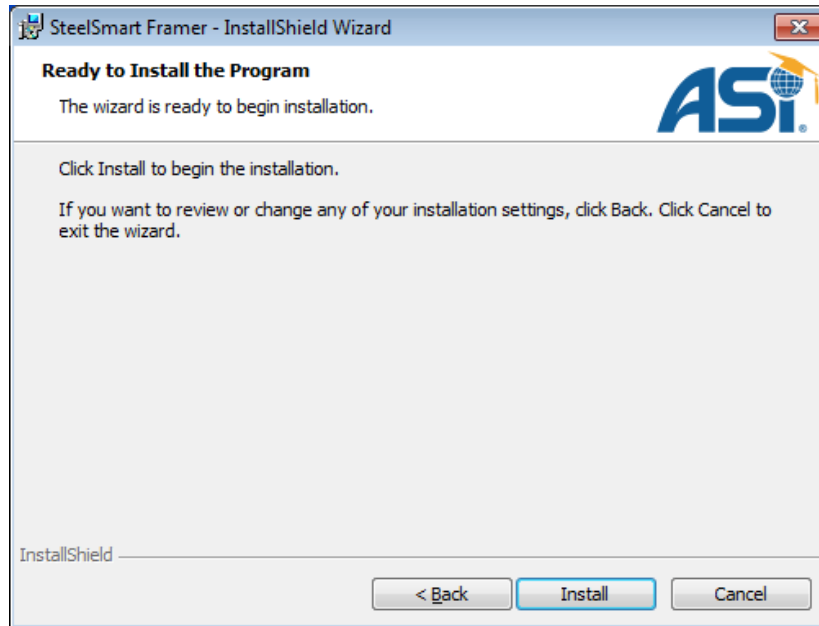
5. Select Complete Installation to install plugins for all versions of Revit or Custom Installation if you would like to select the individual versions of Revit you would like to install the SSF Plugin on:



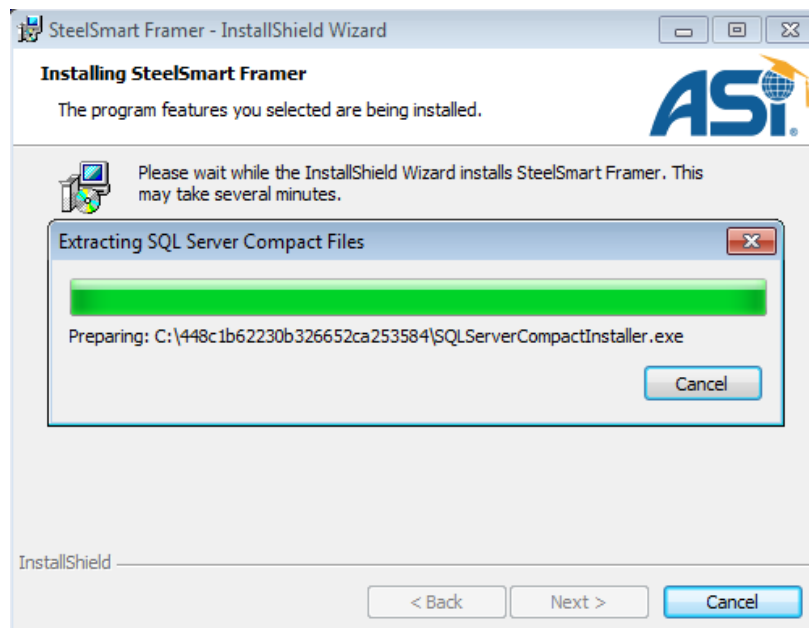
- a. If you selected Custom Installation, Click on the dropdown and select the red X for Revit versions you do not want to install the plugin for.

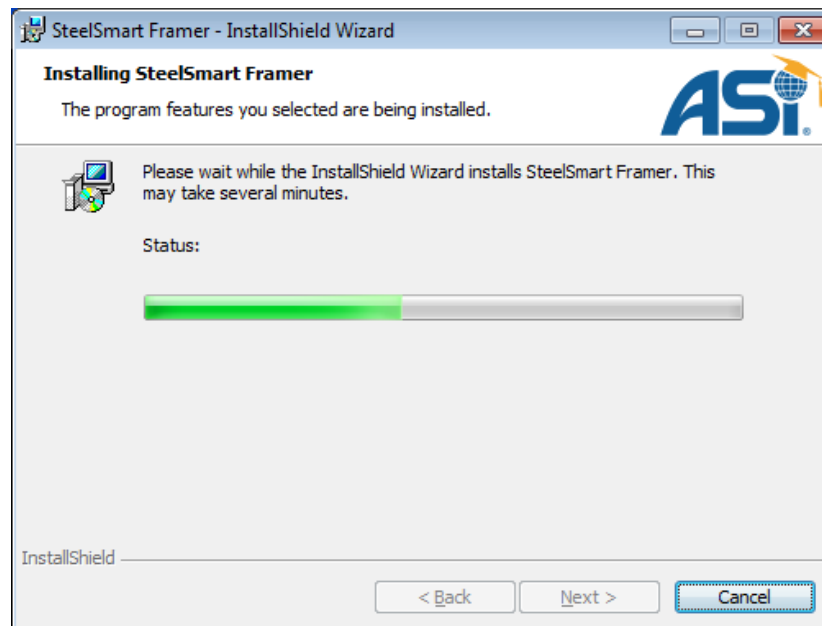


6. Select Next, then Install to begin the installation

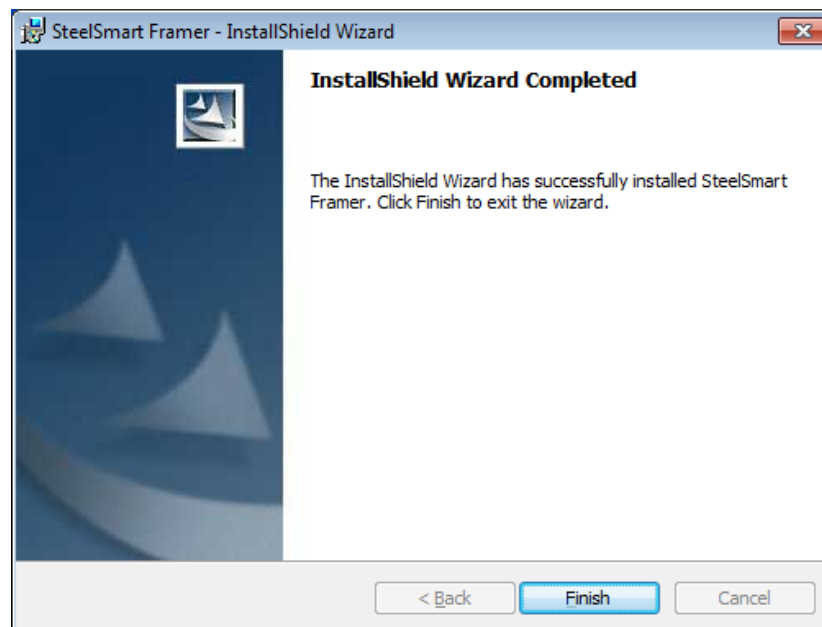


7. You may notice this progress bar installing SQL Server Compact if you do not already have it installed. This is required to run the SSF.





8. Click Finish



SteelSmart® Framer – Plugin for Revit

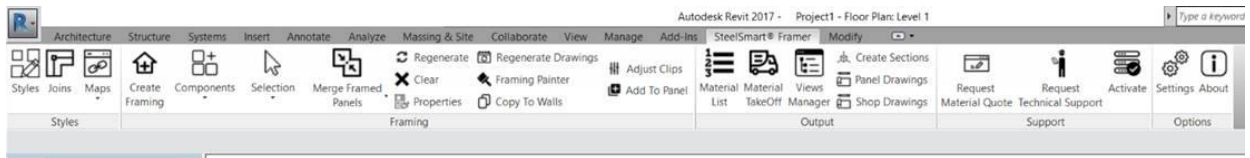
Installation Instructions



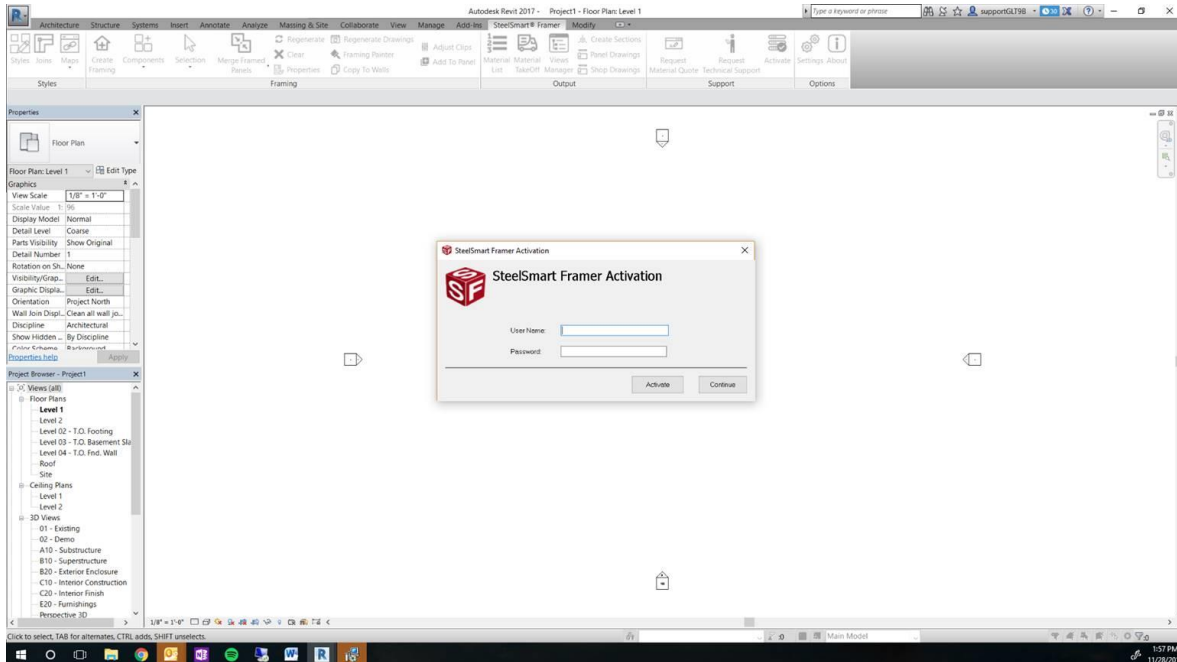
9. Locate and Open the Version of Revit you would like to use the SSF Plugin in.



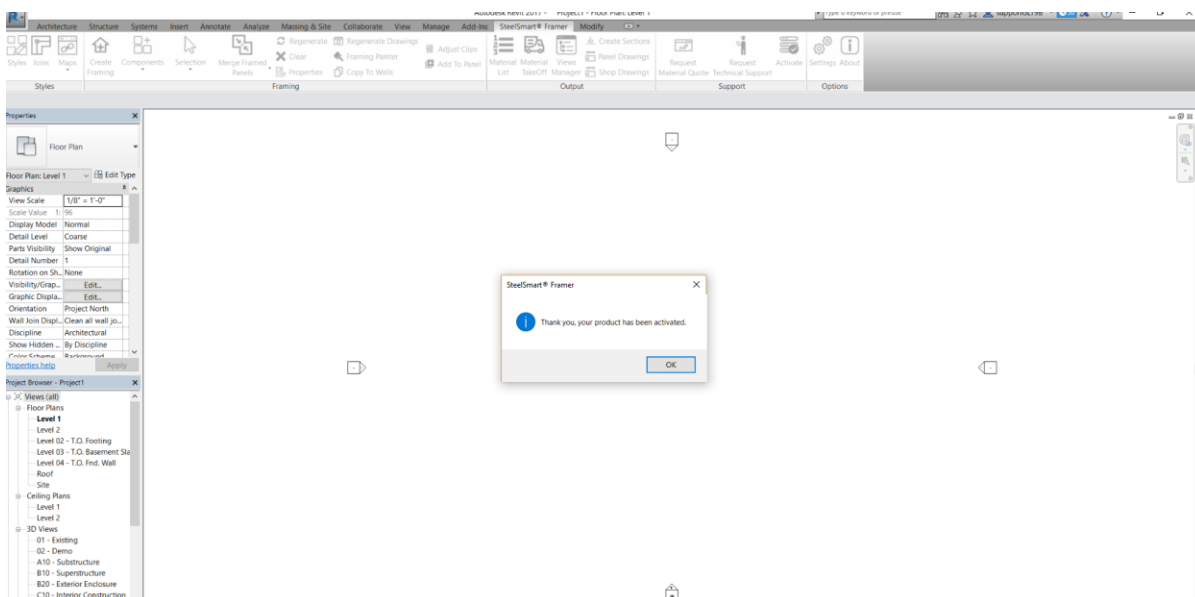
10. Click on the SteelSmart Framers Tab in Revit and Select “Activate”



11. A dialog box will appear prompting you to enter your username and password. Enter the username and password from your account on the ASI Portal that you used to purchase your subscription (<https://portal.appliedscienceint.com>).



12. Once you've entered your username and password from your ASI Portal account, your product will be licensed as long as you have an active subscription.



SteelSmart® Framer – Plugin for Revit

Installation Instructions



Checking Your License:

You can check the remaining duration on your license by clicking the About button on the SteelSmart Framer tab in Revit.

