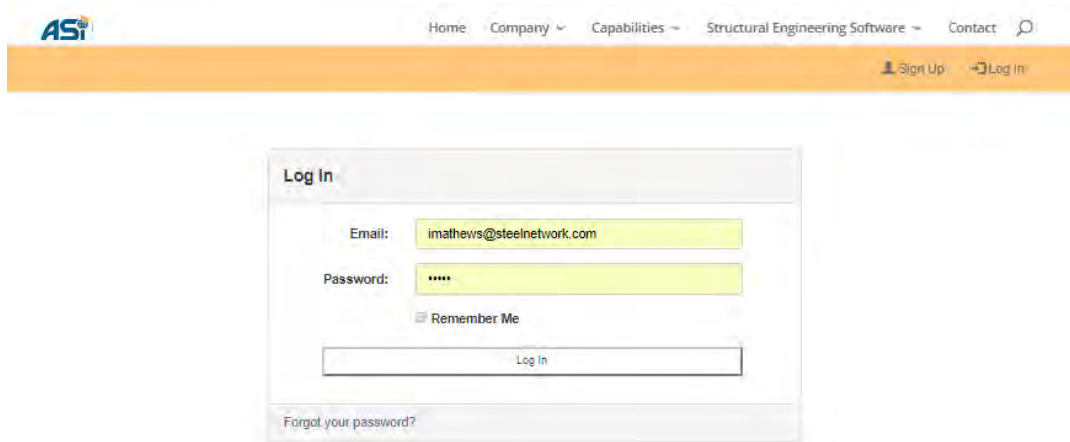


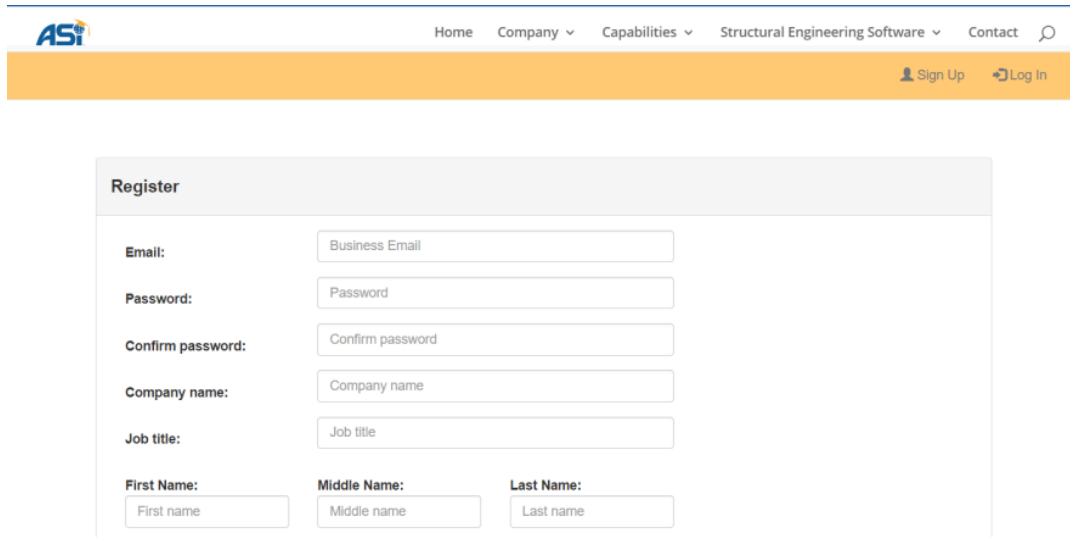
Step 1 - Login or Create an Account at the ASI Portal:

Login: <https://portal.appliedscienceint.com/Account/Login>



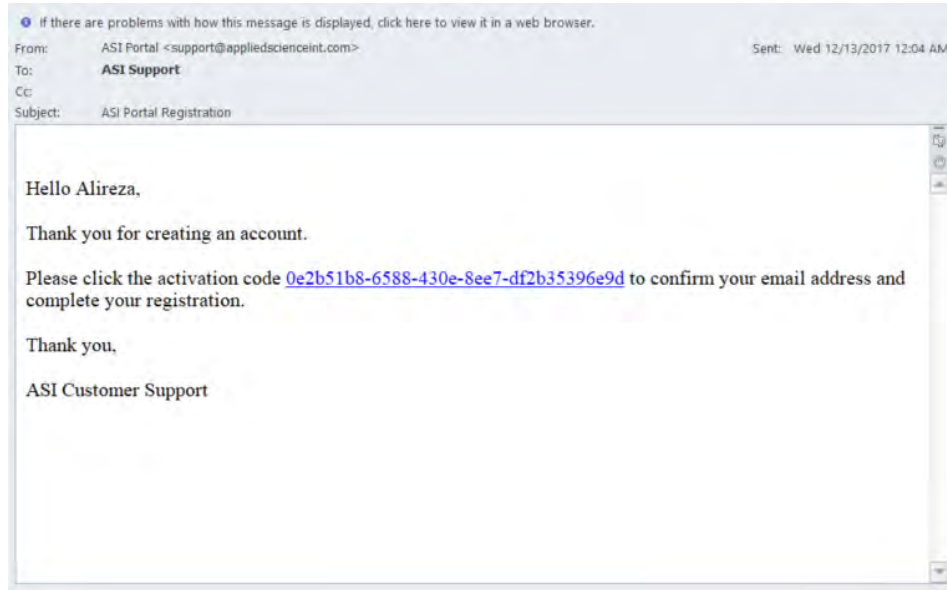
The screenshot shows the ASI portal login page. At the top, there is a navigation bar with the ASI logo on the left and links for Home, Company, Capabilities, Structural Engineering Software, and Contact on the right. Below the navigation bar is an orange banner with 'Sign Up' and 'Log In' buttons. The main content area features a 'Log In' form with the following fields: Email (containing 'imathevs@steelnetwork.com'), Password (masked with '****'), and a 'Remember Me' checkbox. A 'Log In' button is located below the password field. At the bottom of the form, there is a link for 'Forgot your password?'.

Create Account: <https://portal.appliedscienceint.com/Account/Register>



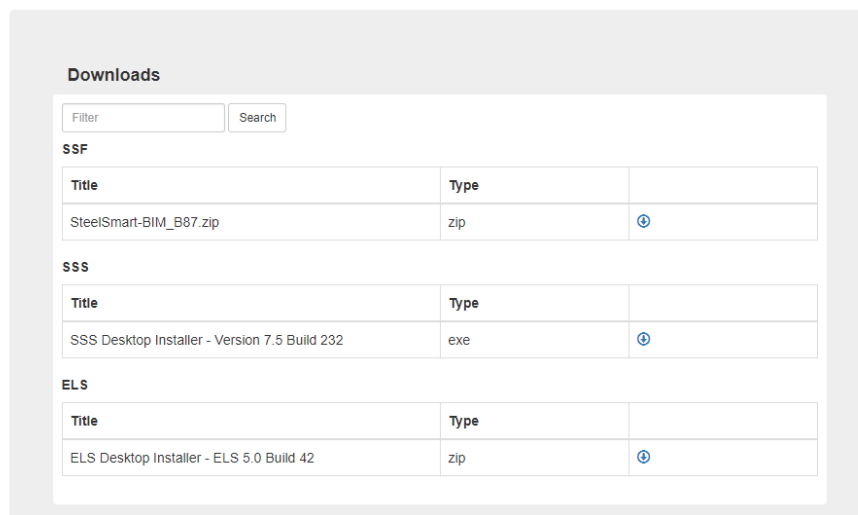
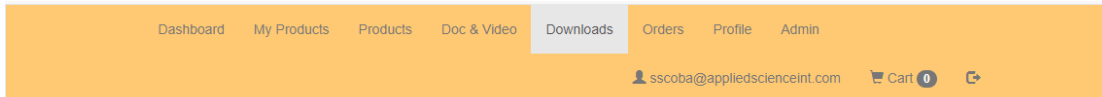
The screenshot shows the ASI portal register page. At the top, there is a navigation bar with the ASI logo on the left and links for Home, Company, Capabilities, Structural Engineering Software, and Contact on the right. Below the navigation bar is an orange banner with 'Sign Up' and 'Log In' buttons. The main content area features a 'Register' form with the following fields: Email (with a placeholder 'Business Email'), Password (with a placeholder 'Password'), Confirm password (with a placeholder 'Confirm password'), Company name (with a placeholder 'Company name'), Job title (with a placeholder 'Job title'), and three separate fields for First Name (with a placeholder 'First name'), Middle Name (with a placeholder 'Middle name'), and Last Name (with a placeholder 'Last name').

Activate Account: Check your Email for Activation Link from support@appliedscienceint.com and Follow Instructions



Step 2 – Navigate to “Downloads” Tab and Download Desired Software

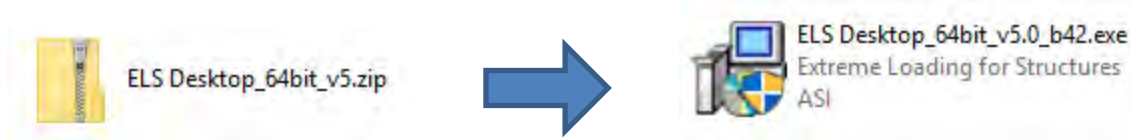
The installer will be located on the Download Tab. Once you’ve downloaded the installer, navigate to where you downloaded it to and unzip the download. Note: You will only see the download if you have an active subscription for the software. If your subscription has expired, renew your subscription through your account on the ASI Portal or contact your ASI Sales Representative.



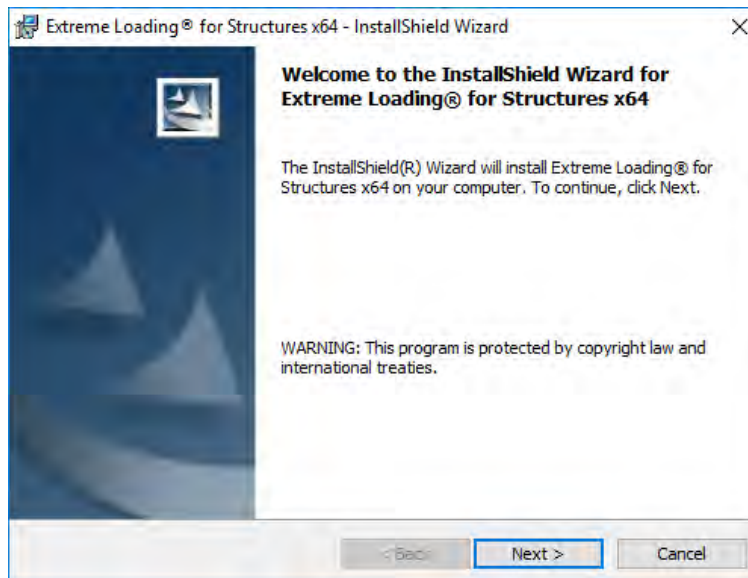
| Downloads | | |
|-----------------------------------------------|--------|---|
| Filter | Search | |
| SSF | | |
| Title | Type | |
| SteelSmart-BIM_B87.zip | zip | 📄 |
| SSS | | |
| Title | Type | |
| SSS Desktop Installer - Version 7.5 Build 232 | exe | 📄 |
| ELS | | |
| Title | Type | |
| ELS Desktop Installer - ELS 5.0 Build 42 | zip | 📄 |

Step 3 - Begin Installation:

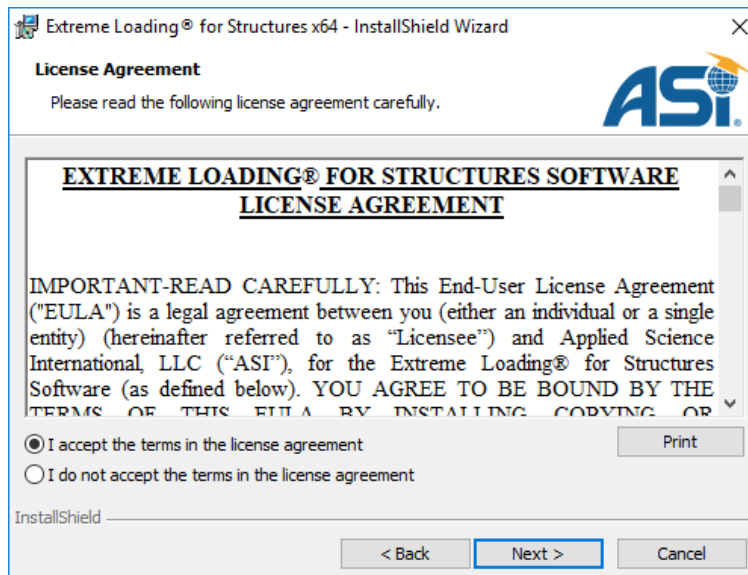
1. Extract the ELS installer from the zip file, then Run the ELS EXE installer;



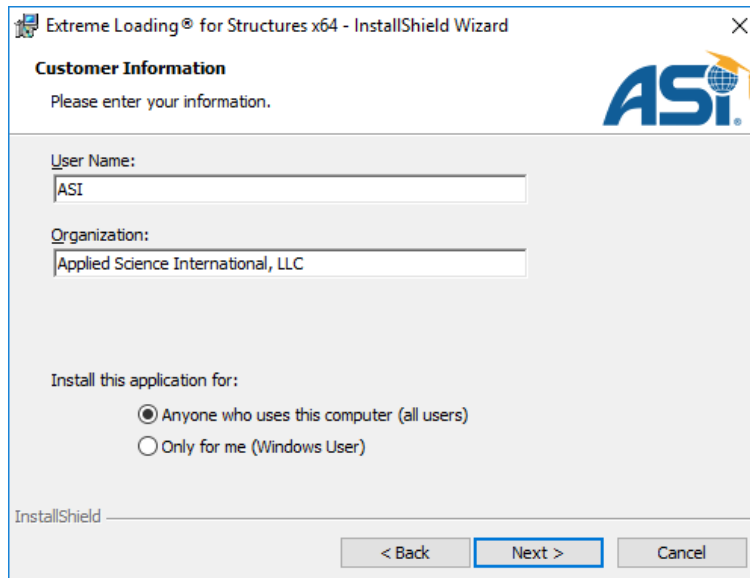
2. Once the installer is extracted, you will see the Install Shield Wizard below, click Next:



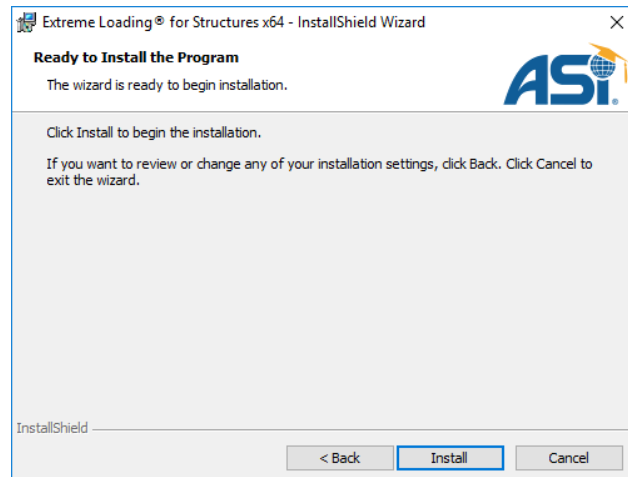
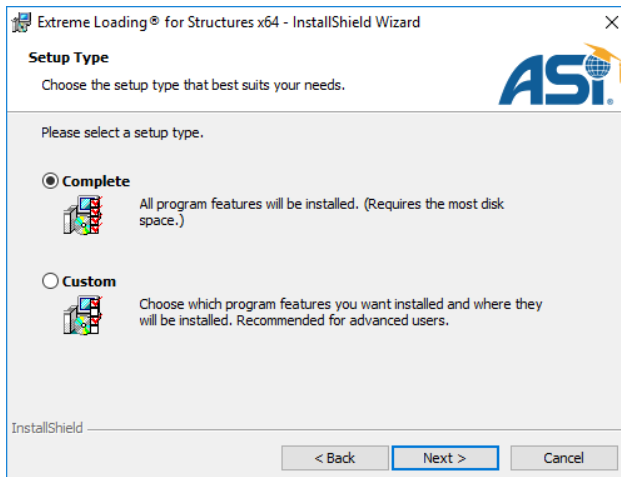
3. Review and accept the End User License Agreement



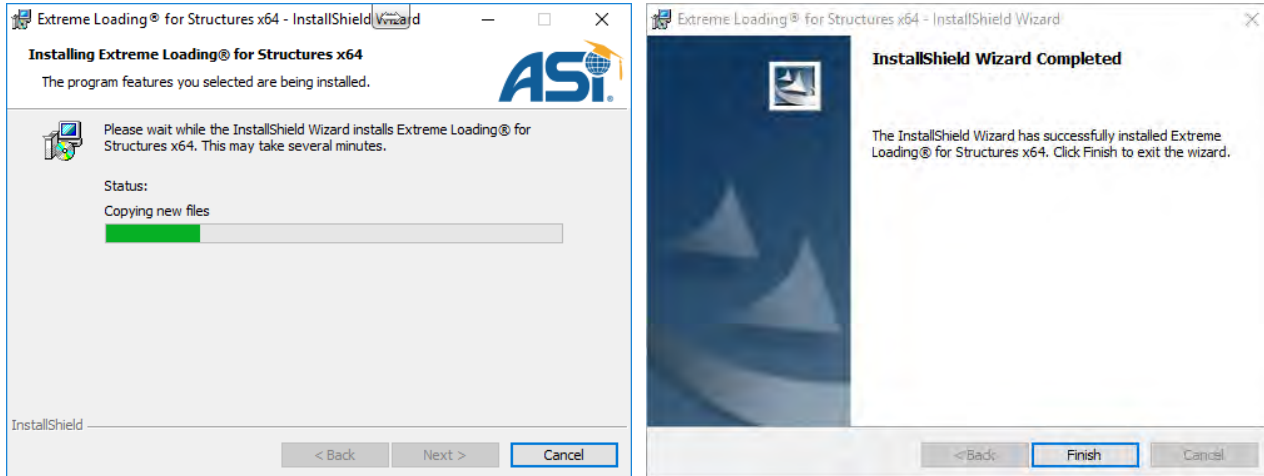
4. When prompted, enter your company information and select Next.



5. Choose Complete Installation, then Next, then Install.



6. Once the Installation is complete, click Finish.

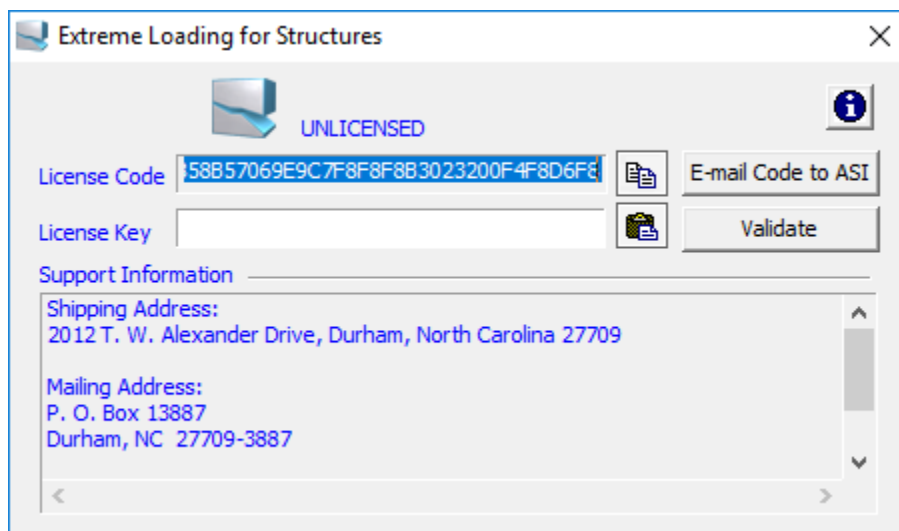


Step 4 - Send License Key by Clicking “Email Code to ASI”

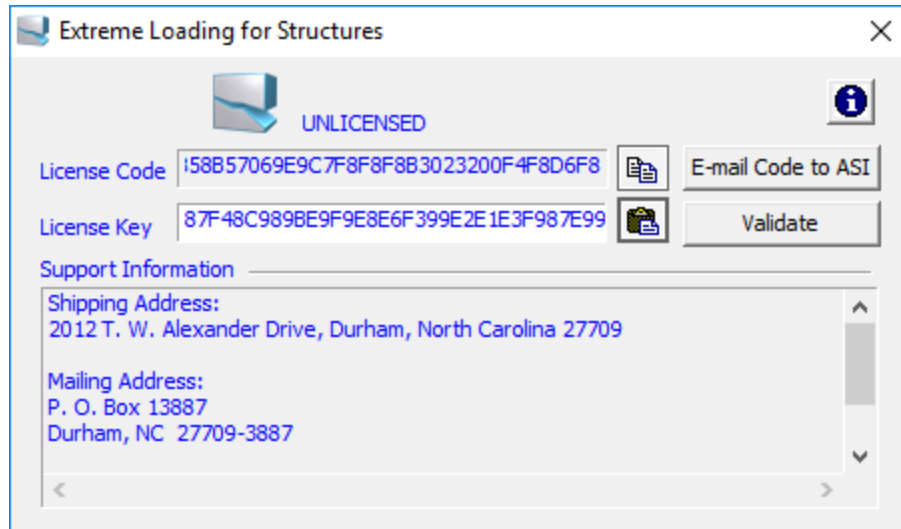
1. Locate and Open the Extreme Loading for Structures Modeler Shortcut from your Desktop.



2. It will prompt you with the screen below. Click email code to ASI and you will receive a license key within 24 hours. Alternatively, License Key can be copied and sent to elskey@appliedscienceint.com (please ensure no spaces are included in code, and you copy entire code)



- When you receive your ELS License code from ASI, paste it in the License Key field and Select “Validate”



Step 5 - Start Designing!

