



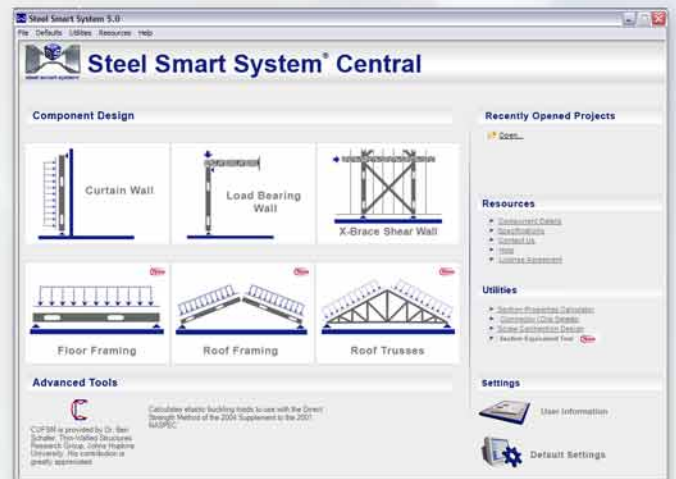
# steel smart system®

## 5.0

## Optimize Light Steel Framing Design

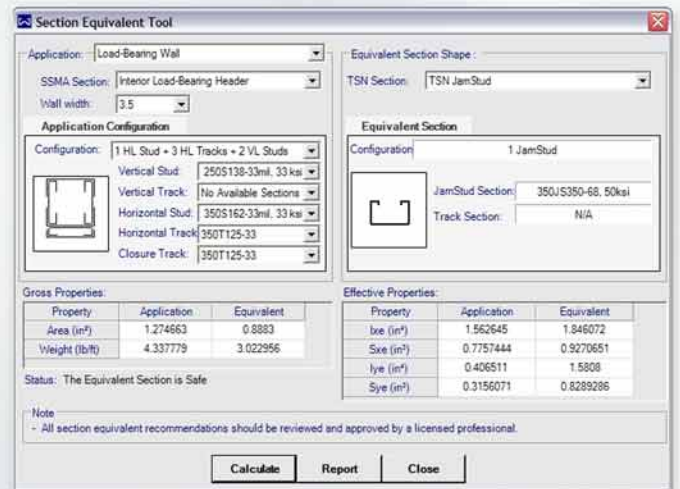
Steel Smart System® (SSS) provides construction professionals with an essential tool engineered for both fast and accurate design, as well as presenting them with the materials necessary for light steel framing.

SSS 5.0 raises the bar for light steel framing analysis and design by seamlessly integrating the well-known analytic power of its predecessors with additional functionality and accessibility. Available as a complete suite, Steel Smart System® will streamline production through the design and detailing of members, connections, and fasteners. Modules include: Curtain Wall, Load Bearing Wall, Shear Wall, Roof Truss, Roof Joist, and Floor Joist.



## New Features & Components:

- **Section Equivalent Calculator** compares generic 'cee' sections with the more efficient SigmaStud®, JamStud®, or StiffWall® sections
  - o Optimize member selection
  - o Minimize built-up sections
  - o Reduce steel thickness/materials



## Select the optimal component to fit project conditions:



Generic  
SSMA (S) Section



SigmaStud®  
Load Bearing Wall



JamStud®  
Jambs & Headers

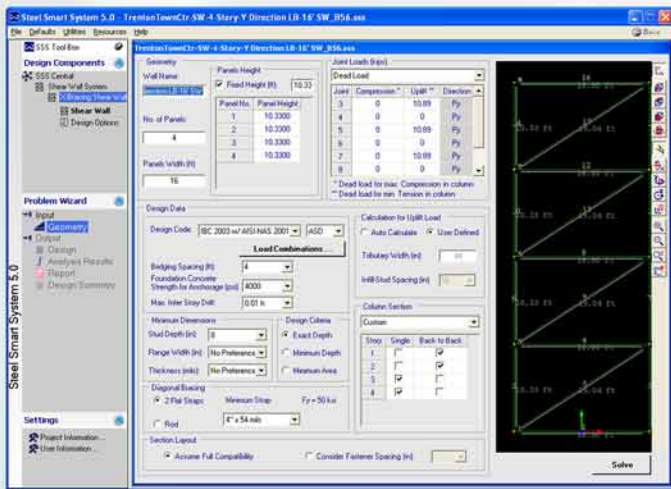
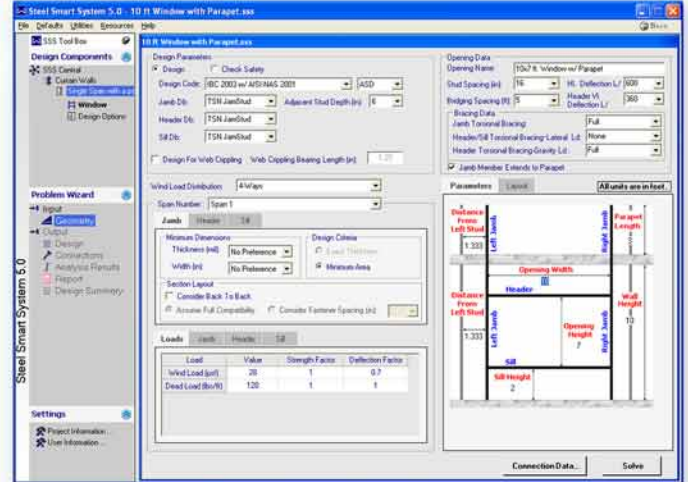


StiffWall®  
Shear Wall



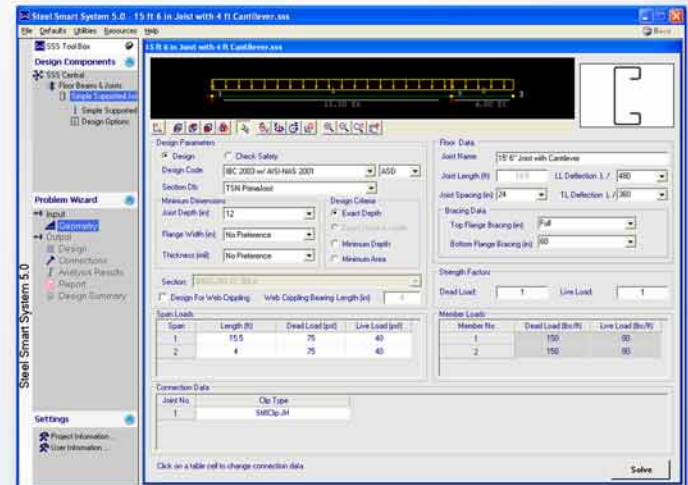
# steel smart system<sup>®</sup> 5.0

- **Enhanced Wall Opening Design** now considers the parapet effect on the jambs.
  - o New header database to provide optimal design
  - o Now includes calculations for weak axis (gravity direction) & strong axis (wind direction) interaction check (in headers)



- **Powerful X-Brace Shear Wall Design**
  - o Inter-story drift check added
  - o More corner connection options
  - o Optimize column section

- **New Floor Joist Module**
  - o Simplified Joist design
  - o Select from SSMA or PrimeJoist<sup>™</sup> sections
  - o Choose from predetermined templates or define a custom template



# Steel Smart System<sup>®</sup> 5.0 Available Modules

